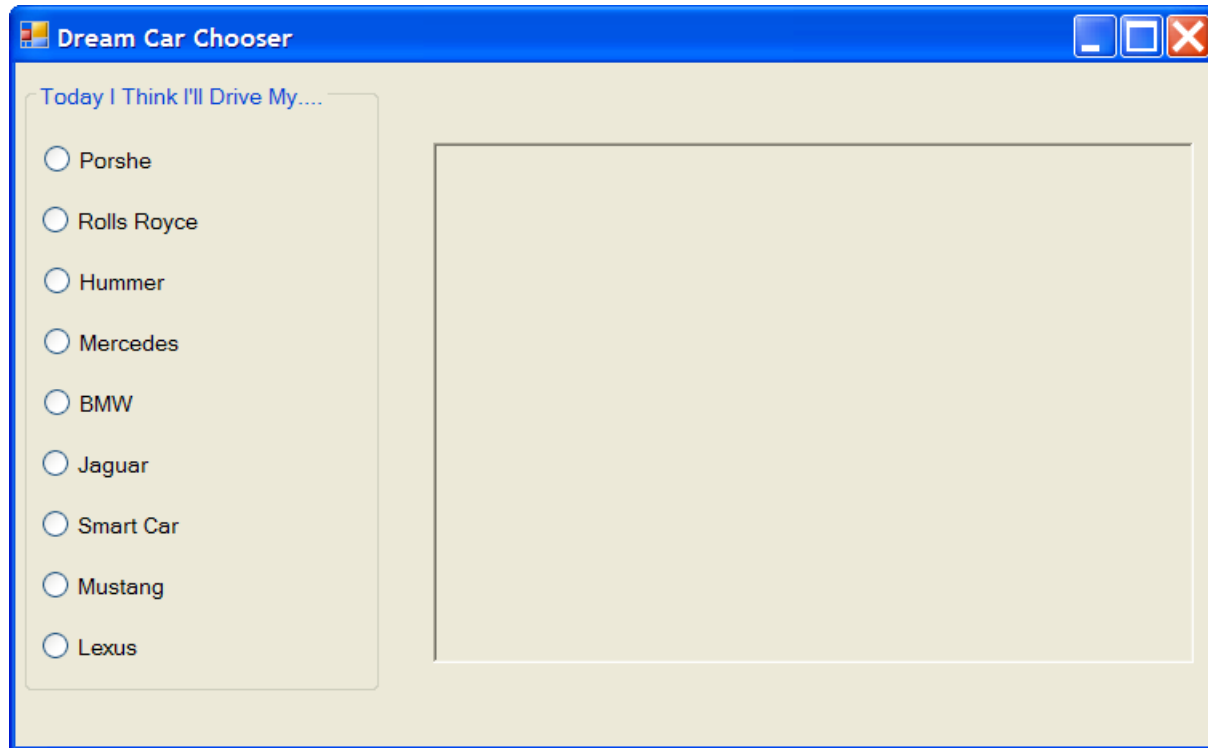


# Completing The Dream Car Program

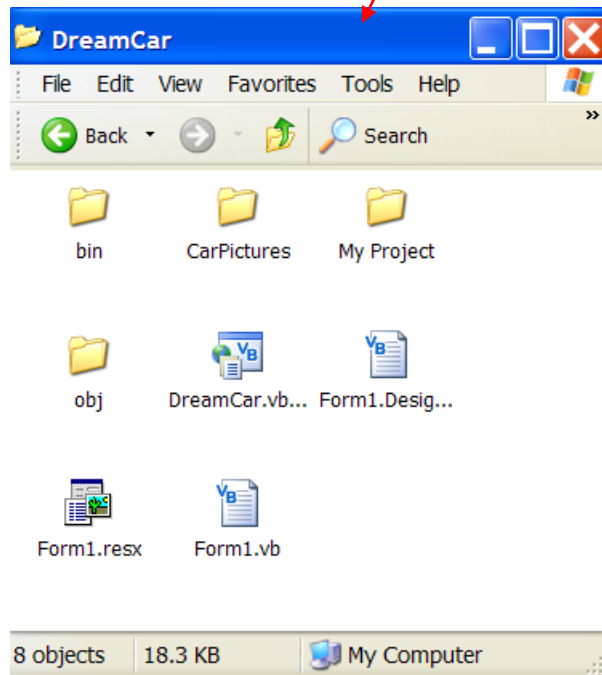
Here is the interface again, remember to use the format features of of VB to get nicely aligned controls.



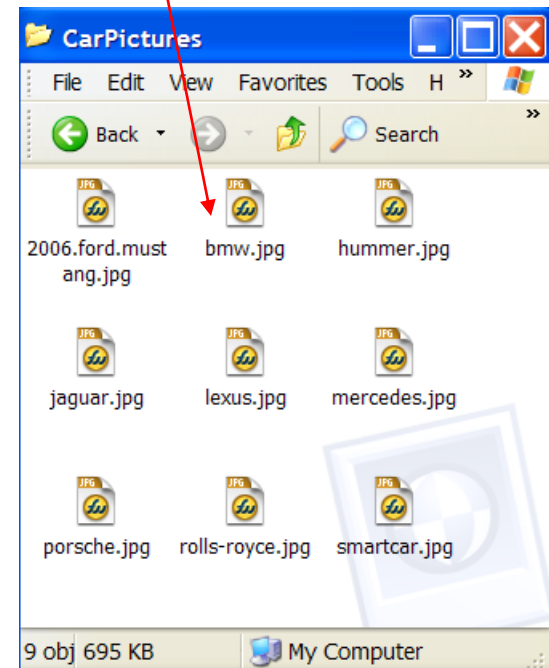
# Organize the Images

Within the project folder create a separate folder to organize your images. Inside this image folder make sure your image files are named clearly. Avoid spaces and confusing names.

Image folder within project folder



Short descriptive names of image files.



# Declare Images and Image Paths

The most labour-intensive part of this program involves the declaration of the images and their paths.

Be sure to use consistent styles when doing this portion of the program.

Put all the declarations together at the top of your program.

Make ample use of the cut-and-paste features of VB

# Organize Declarations Carefully!

```
Public Class Form1
```

```
    Dim porschePath As String = _  
        "C:\Documents and Settings\James\My Documents\Visual Studio 2005\Projects\DreamCar\DreamCar\CarPictures\porsche.jpg"  
    Dim rollsPath As String = _  
        "C:\Documents and Settings\James\My Documents\Visual Studio 2005\Projects\DreamCar\DreamCar\CarPictures\rolls.jpg"  
    Dim hummerPath As String = _  
        "C:\Documents and Settings\James\My Documents\Visual Studio 2005\Projects\DreamCar\DreamCar\CarPictures\hummer.jpg"  
    Dim mercPath As String = _  
        "C:\Documents and Settings\James\My Documents\Visual Studio 2005\Projects\DreamCar\DreamCar\CarPictures\mercedes.jpg"  
    Dim bmwPath As String = _  
        "C:\Documents and Settings\James\My Documents\Visual Studio 2005\Projects\DreamCar\DreamCar\CarPictures\bmw.jpg"  
    Dim jaguarPath As String = _  
        "C:\Documents and Settings\James\My Documents\Visual Studio 2005\Projects\DreamCar\DreamCar\CarPictures\jaguar.jpg"  
    Dim smartcarPath As String = _  
        "C:\Documents and Settings\James\My Documents\Visual Studio 2005\Projects\DreamCar\DreamCar\CarPictures\smartcar.jpg"  
    Dim mustangPath As String = _  
        "C:\Documents and Settings\James\My Documents\Visual Studio 2005\Projects\DreamCar\DreamCar\CarPictures\mustang.jpg"  
    Dim lexusPath As String = _  
        "C:\Documents and Settings\James\My Documents\Visual Studio 2005\Projects\DreamCar\DreamCar\CarPictures\lexus.jpg"  
  
    Dim imgPorsche As Image = Image.FromFile(porschePath)  
    Dim imgRolls As Image = Image.FromFile(rollsPath)  
    Dim imgHummer As Image = Image.FromFile(hummerPath)  
    Dim imgMercedes As Image = Image.FromFile(mercPath)  
    Dim imgBMW As Image = Image.FromFile(bmwPath)  
    Dim imgJaguar As Image = Image.FromFile(jaguarPath)  
    Dim imgSmartCar As Image = Image.FromFile(smartcarPath)  
    Dim imgMustang As Image = Image.FromFile(mustangPath)  
    Dim imgLexus As Image = Image.FromFile(lexusPath)
```

# Radio Button Code

```
Private Sub radBMW_CheckedChanged(ByVal sender  
    picCar.Image = imgBMW  
End Sub
```

ImageList	(none)
Location	<b>11, 76</b>
Locked	False
Margin	3, 3, 3, 3
MaximumSize	0, 0
MinimumSize	0, 0
Modifiers	<b>Friend</b>
Padding	0, 0, 0, 0
RightToLeft	No
Size	<b>104, 21</b>
TabIndex	<b>1</b>
TabStop	False
Tag	
Text	<b>Rolls Royce</b>
TextAlign	MiddleLeft
TextImageRelation	Overlay
UseCompatibleTextRer	False
UseMnemonic	True
UseVisualStyleBackCok	<b>True</b>

Set TabStop property to False so that Image doesn't appear by default when program runs

# Running the Program

